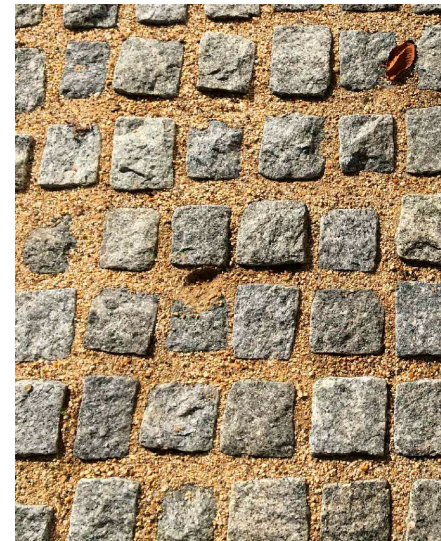




STREETScape PRECEDENT IMAGE



MONUMENTAL STAIR WITH SEAT BLOCKS



GRANITE COBBLE PAVERS



SINGLE GLOBE LIGHT



TEARDROP PENDANT LIGHT



CONCRETE PAVING



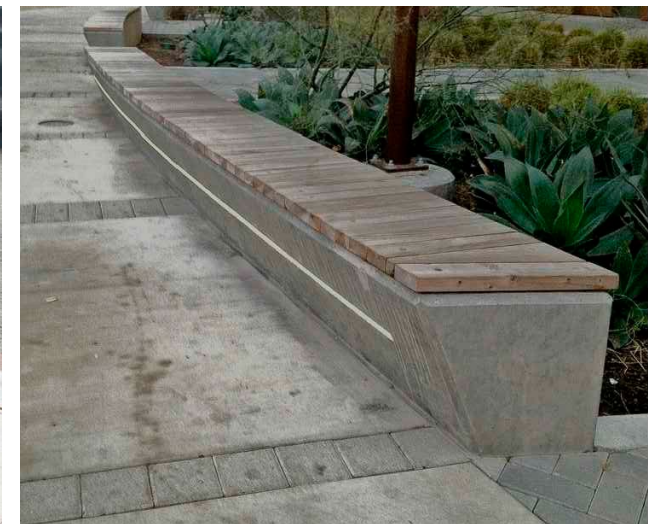
SPECIAL PAVING



BIKE RACK



TRASH RECEPTACLES



MOUNTED BENCH ON SEAT BLOCK



SMALL TREE



STREET TREE



EXTENSIVE GREENROOF



INTENSIVE GREENROOF



STREETSCAPE PRECEDENT IMAGE



PERENNIAL PLANTING



SHRUB PLANTING



SHRUB PLANTING



PERENNIAL PLANTING


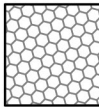
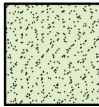
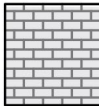


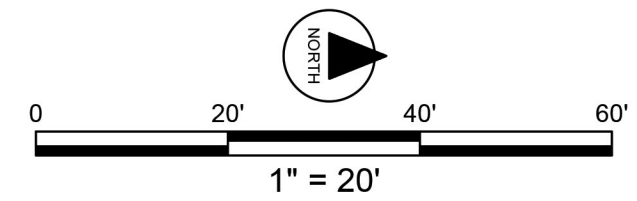
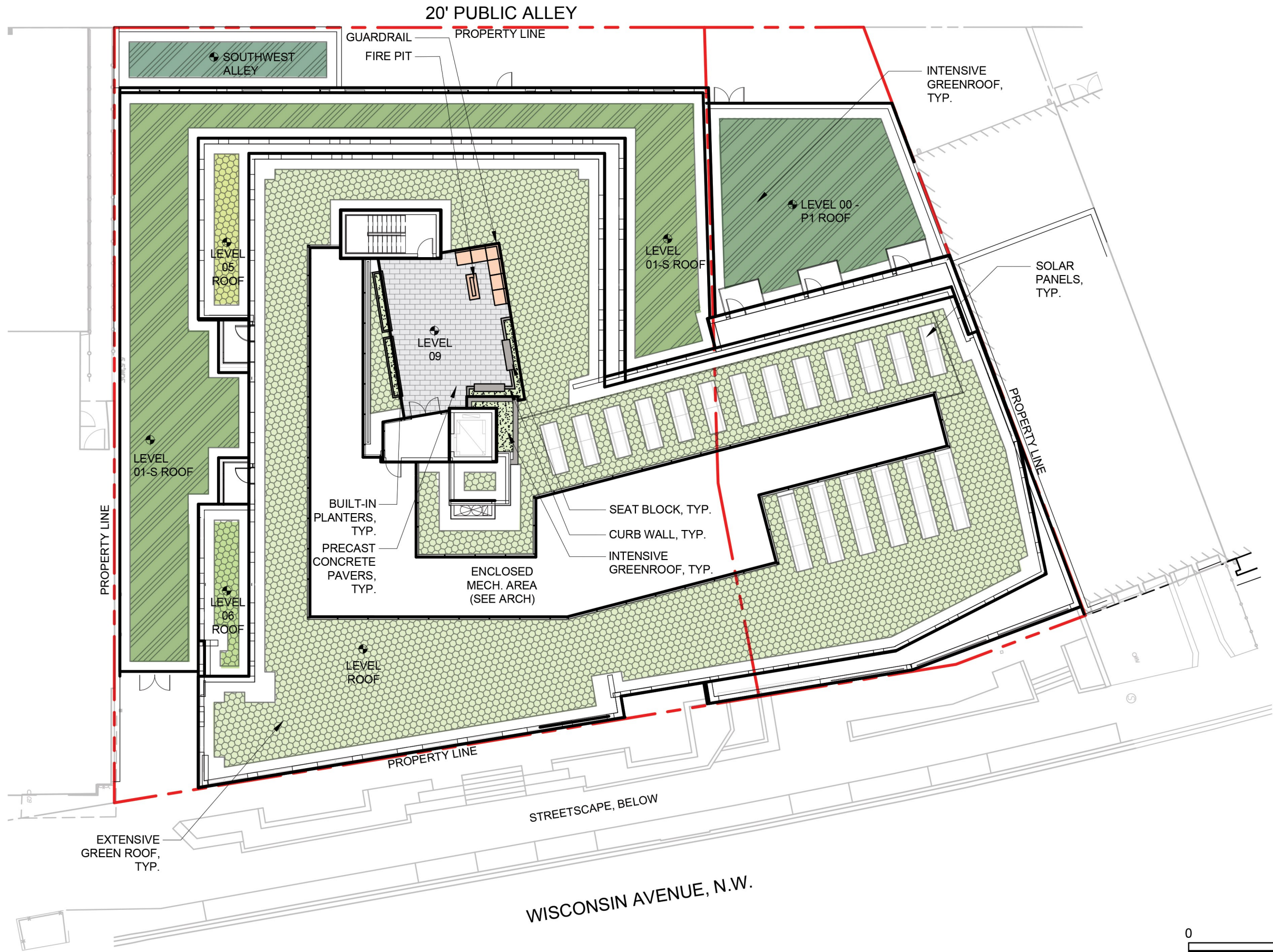
GROUNDCOVER PLANTING

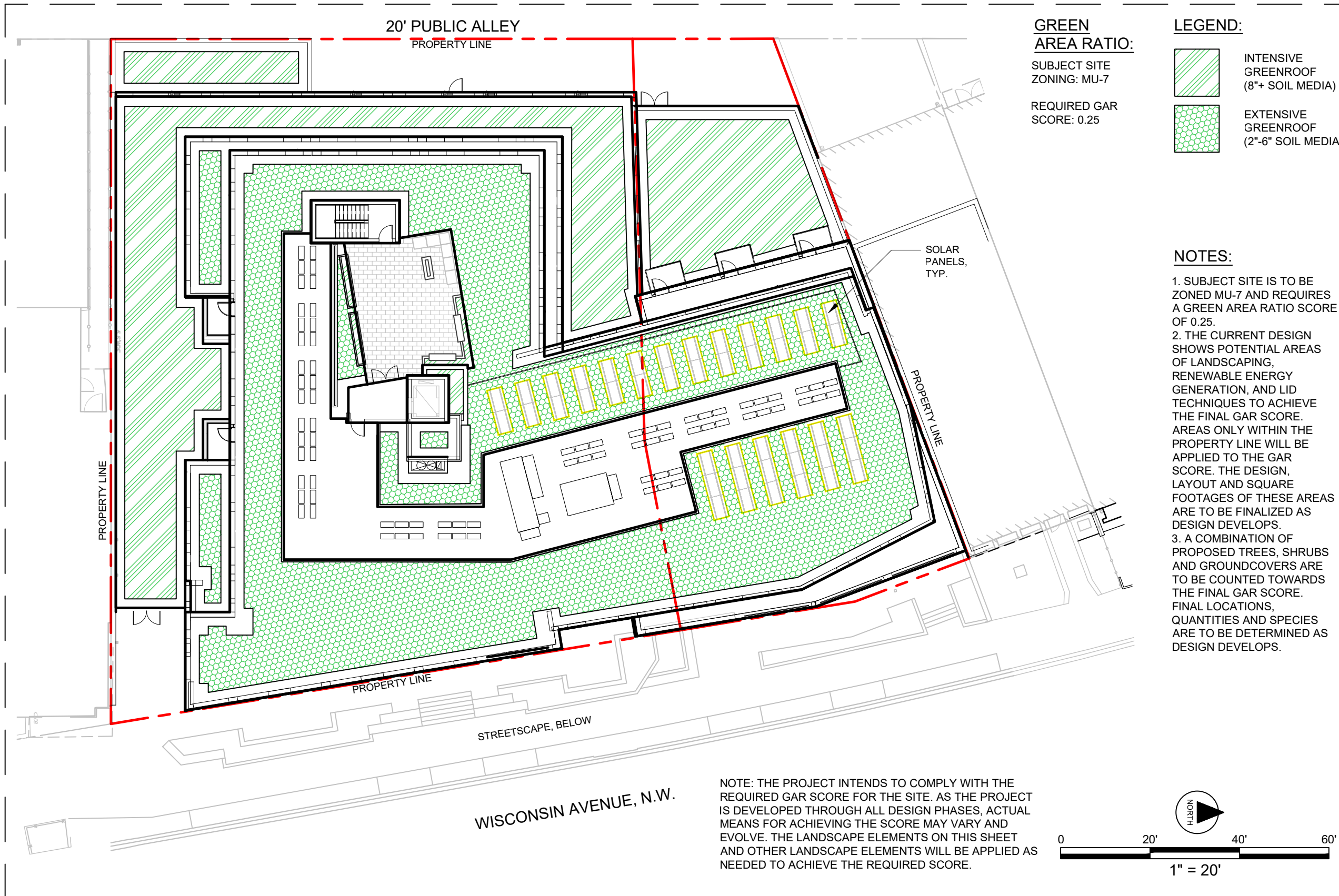


ORNAMENTAL GRASS PLANTING

LEGEND:

-  INTENSIVE GREENROOF
-  EXTENSIVE GREENROOF
-  INTENSIVE GREENROOF AT AMENITY TERRACE
-  PRECAST CONCRETE PAVERS



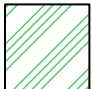
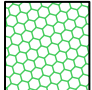


GREEN AREA RATIO:

SUBJECT SITE ZONING: MU-7

REQUIRED GAR SCORE: 0.25

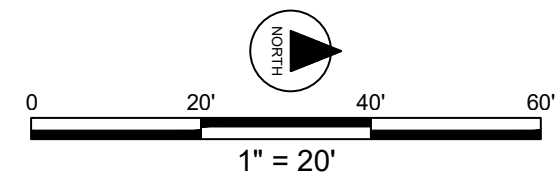
LEGEND:

-  INTENSIVE GREENROOF (8"+ SOIL MEDIA)
-  EXTENSIVE GREENROOF (2"-6" SOIL MEDIA)

NOTES:

1. SUBJECT SITE IS TO BE ZONED MU-7 AND REQUIRES A GREEN AREA RATIO SCORE OF 0.25.
2. THE CURRENT DESIGN SHOWS POTENTIAL AREAS OF LANDSCAPING, RENEWABLE ENERGY GENERATION, AND LID TECHNIQUES TO ACHIEVE THE FINAL GAR SCORE. AREAS ONLY WITHIN THE PROPERTY LINE WILL BE APPLIED TO THE GAR SCORE. THE DESIGN, LAYOUT AND SQUARE FOOTAGES OF THESE AREAS ARE TO BE FINALIZED AS DESIGN DEVELOPS.
3. A COMBINATION OF PROPOSED TREES, SHRUBS AND GROUNDCOVERS ARE TO BE COUNTED TOWARDS THE FINAL GAR SCORE. FINAL LOCATIONS, QUANTITIES AND SPECIES ARE TO BE DETERMINED AS DESIGN DEVELOPS.

NOTE: THE PROJECT INTENDS TO COMPLY WITH THE REQUIRED GAR SCORE FOR THE SITE. AS THE PROJECT IS DEVELOPED THROUGH ALL DESIGN PHASES, ACTUAL MEANS FOR ACHIEVING THE SCORE MAY VARY AND EVOLVE. THE LANDSCAPE ELEMENTS ON THIS SHEET AND OTHER LANDSCAPE ELEMENTS WILL BE APPLIED AS NEEDED TO ACHIEVE THE REQUIRED SCORE.



Green Area Ratio Scoresheet

Address: 4620-4624 Wisconsin Avenue NW Ward: 3 Lot: 458,49 Square: 1732 Zoning District: C-3-A

Other / BZA Order: None enter sq ft of lot: 23,741 multiple SCORE: 0.310

Lot size (enter this value first) *

Landscape Elements

A Landscaped areas (select one of the following for each area)

- 1 Landscaped areas with a soil depth of less than 24" 0.3
- 2 Landscaped areas with a soil depth of 24" or greater 0.6
- 3 Bioretention facilities 0.4

B Plantings (credit for plants in landscaped areas from Section A)

- 1 Groundcovers, or other plants less than 2' tall at maturity 0.2

- 2 Plants, not including grasses, 2' or taller at maturity - calculated at 9 sq ft per plant (typically planted no closer than 18" on center) 0.3

- 3 Tree canopy for all new trees 2.5" to 6" diameter or equivalent - calculated at 50 sq ft per tree 0.5

- 4 Tree canopy for new trees 6" diameter or larger or equivalent - calculated at 250 sq ft per tree 0.6

- 5 Tree canopy for preservation of existing tree 6" to 12" diameter or larger or equivalent - calculated at 250 sq ft per tree 0.7

- 6 Tree canopy for preservation of existing tree 12" to 18" diameter or larger or equivalent - calculated at 600 sq ft per tree 0.7

- 7 Tree canopy for preservation of all existing trees 18" to 24" dia. or equivalent - calculated at 1300 sq ft per tree 0.7

- 8 Tree canopy for preservation of all existing trees 24" diameter or larger or equivalent - calculated at 2000 sq ft per tree 0.8

- 9 Vegetated wall, plantings on a vertical surface 0.6

C Vegetated or "green" roofs

- 1 Over at least 2" and less than 8" of growth medium 0.6 4,050.0

- 2 Over at least 8" of growth medium 0.8 2,920.0

D Permeable Paving***

- 1 Permeable paving over at least 6" and less than 24" of soil or gravel 0.4

- 2 Permeable paving over at least 24" of soil or gravel 0.5

E Other

- 1 Enhanced tree growth systems*** 0.4

- 2 Renewable energy generation 0.5 383.5

- 3 Approved water features 0.2

sub-total of sq ft = 11,167

H Bonuses

- 1 Native plant species 0.1

- 2 Landscaping in food cultivation 0.1

- 3 Harvested stormwater irrigation 0.1

Green Area Ratio numerator = 7,354

*** Permeable paving and structural soil together may not qualify for more than one third of the Green Area Ratio score.
Total square footage of all permeable paving and enhanced tree growth

